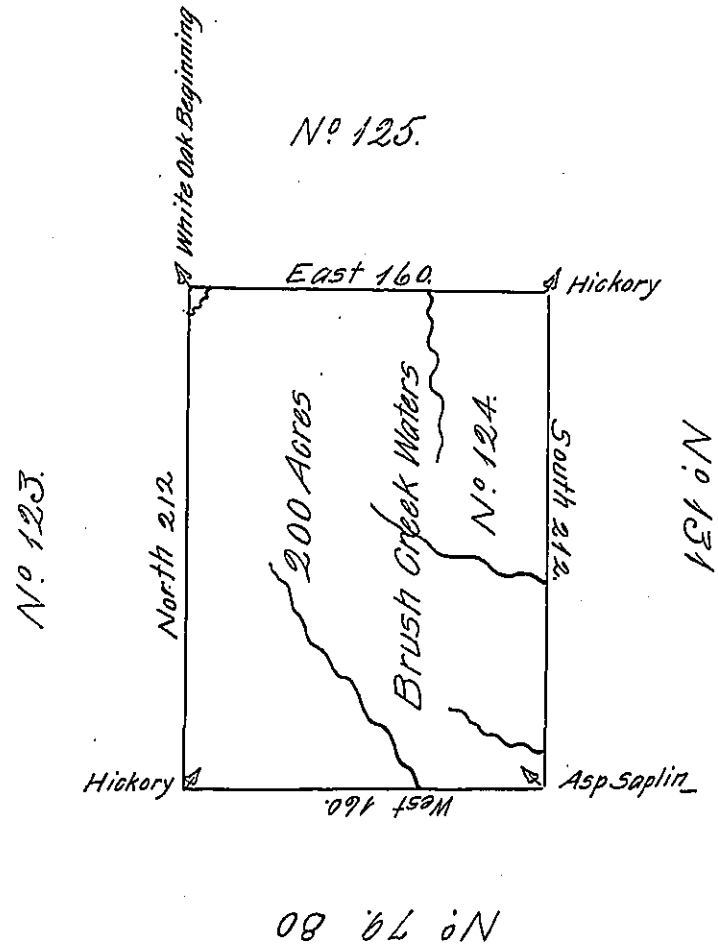


✓



The above is a Draught of a Survey made in The Month of June 1785 in Pursuance of instruction from the Surveyor General Dated January 22<sup>d</sup> 1785 Situate on the North Side of the Ohio River on the Waters of Brush Creek in No 2 Containing 200 Acres with the Usual Allowance of 6 P. Cent.

Dan<sup>l</sup> Leet D.S.

To

John Lukens Esq<sup>r</sup> Sur<sup>r</sup> Gen<sup>r</sup>

IN TESTIMONY that the above is a copy of the original remaining on file in the Department of Internal Affairs of Pennsylvania, made conformably to an Act of Assembly approved the 16th day of February, 1833, I have hereunto set my Hand and caused the Seal of said Department to be affixed at Harrisburg, this fourteenth day of November 1905.

*James P. Brown*  
Secretary of Internal Affairs.